

## Thyristor power regulator with current control "RM0731"

### 1) Description.

The RM0731 is a thyristor power regulator with current control.

Applications: furnaces, water heaters, infrared lamps, motor etc.

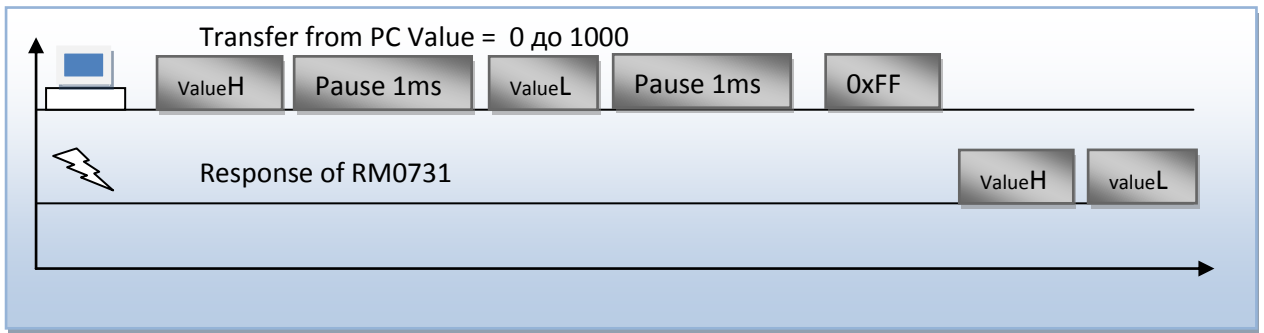
Device can be managed from control panel or via PC.

(RS232TTL ,RX,TX ) or PC (RS232 RX,TX).

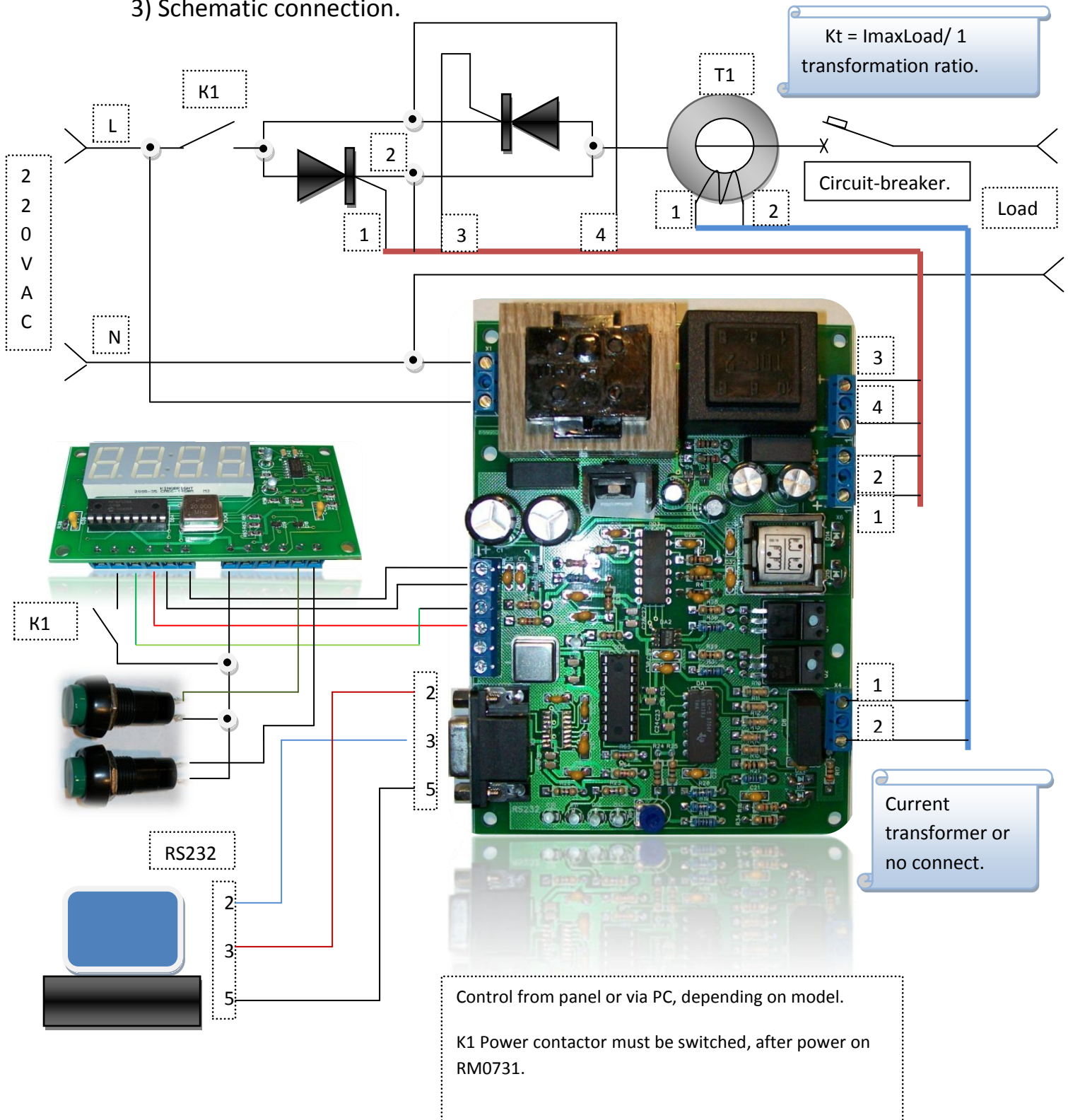


### 2) Electrical characteristics.

Input voltage	220VAC +-10% 50/60hz
Power consumption	10w
Power out	Depends on the type of thyristors used
Time pulse	400 us
Current pulse	300ma – 500ma
Discrete adjustments	0,1% (0-1000)
Regulator	$\alpha_{Min} = 15$ $\alpha_{Max} = 165$
Size	140x110x40 mm. panel90x50x20mm
interface	Rs232 TTL Rs232
Housing IP	-----

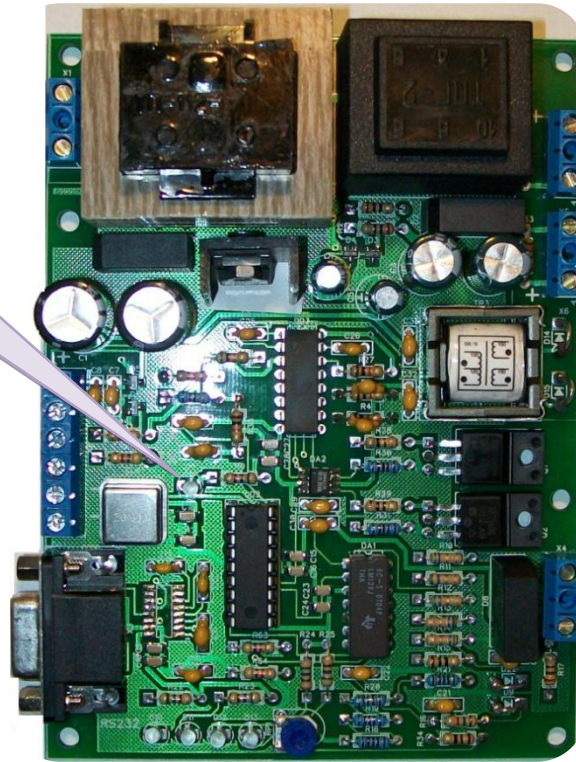


### 3) Schematic connection.



#### 4) Description of the indicators / regulators.

LED indicator is lit if OK or blinks if power output is not established.



Load current LED indicators (If current transformer is connected)

D13 current overload.

POT Current adjustment. (If current transformer is connected)